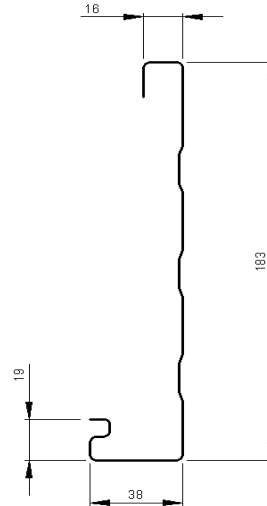
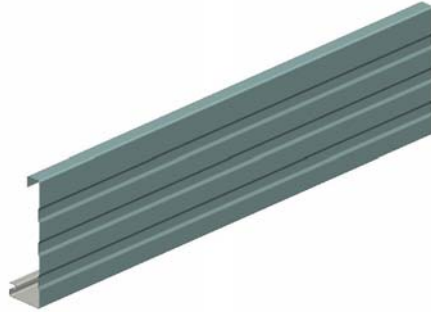


# FASCIA 185



<b>USE:</b>	Residential housing and industrial projects Suitable for metal and tile roofing applications		
<b>QUALITIES:</b>	High tensile steel supplied by Bluescope Steel Limited Available in all COLORBOND® colours & ZINCALUME®		
<b>PERFORMANCE:</b>	Quick fixing due to highest quality roll forming Use with Pantex or other gutters		
<b>DESIGN:</b>	Height	183mm	
	Width	38mm	
	Lengths	Made to order up to 8 mtr	
<b>PROPERTIES:</b>	ZINCALUME® alloy coated AZ150 conforms to AS1397 COLORBOND® coated steel in accordance with AS2728 – Category 3 A plastic film protects this product from scratches during fixing		
	Base Metal Thickness BMT (mm)	-	0.42
	Tensile Strength (MPa)	-	550
	Mass (kg/lineal mtr)	ZA CB	0.99 1.01
<b>INSTALLATION:</b>	<ul style="list-style-type: none"> <li>• Maximum span between fascia brackets - 1200mm</li> <li>• Use string line and level to line up fascia brackets to achieve level fascia</li> <li>• Fix fascia brackets to rafters - Timber 12g x 25 hex head - Type 17 - Metal 10g x 16 Hex head - Self Drilling</li> <li>• Fit top of fascia over fascia brackets and clip onto bottom</li> <li>• Remove plastic coating from finished installation</li> </ul>		
<b>ACCESSORIES:</b>	Fascia support brackets	Attaches to ends of rafters	Galvanised
	Internal Fascia angle	90° internal corner bracket	Galvanised
	Internal Fascia mitre	90° internal corner lower cover	COLORBOND®
	External Fascia mitre	90° external corner	COLORBOND®
	Fascia joining sleeve	180° joining sleeve	COLORBOND®
	Fascia barge mitres	Fascia stop ends – L & R hand	COLORBOND®